

Willow woodchip for top fruit scab control | Scab assessments

In order to assess the efficacy of willow woodchip in combatting apple scab the triallists will review yield and quality in both the treated and untreated trees. The visual assessment of disease levels will be done by growers, supported by the field lab researcher Dr Glynn Bartlett and coordinator Tony Little and using the scale detailed in this document.

SCAB SEVERITY SCALE

Leaf scale 0: No leaves showing any scab symptoms



Leaf scale 1: 1-10% leaves affected with scab



Leaf scale 2: 11-25% leaves affected with scab



Leaf scale 3: 26-50% leaves affected with scab



Leaf scale 4: 51-100% leaves affected with scab



Fruit

FRUIT SCALE OF 0 (No fruit showing any scab symptoms)



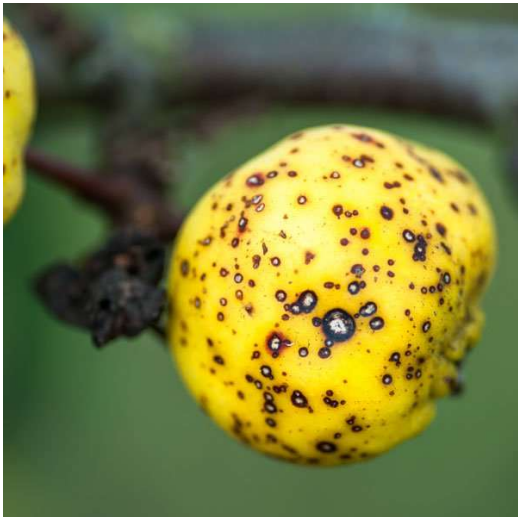
FRUIT SCALE OF 1 (1-10% fruit affected with scab)



FRUIT SCALE OF 2 (11-25% fruit affected with scab)



FRUIT SCALE OF 3 (26-50% fruit affected with scab)



FRUIT SCALE OF 4 (51-100% fruit affected with scab)

